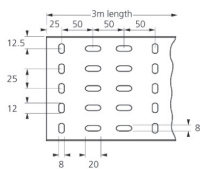
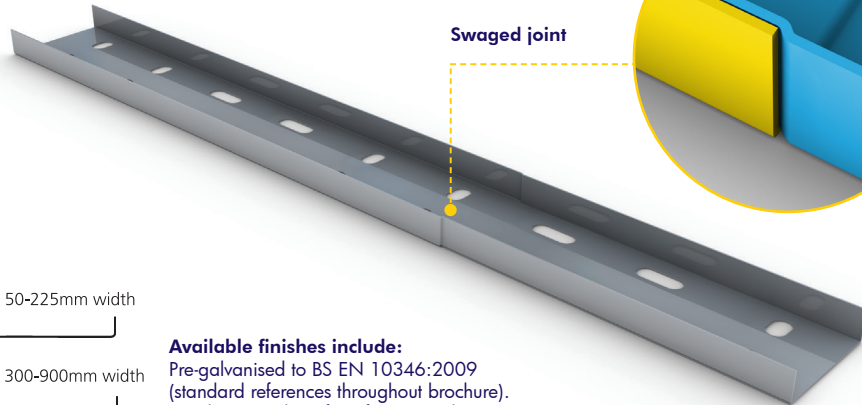


**Light Duty Cable Tray (in accordance with BS 61537:2007)**

All light duty tray lengths up to and including KLLD225T come complete with swaged end for ease of coupling and to eliminate the need for couplers). KLLD300T and above require the use of couplers. A range of gauges are available on request.

Ref.	Tray Width mm
KLLD50T	50
KLLD75T	75
KLLD100T	100
KLLD150T	150
KLLD225T	225
KLLD300T	300
KLLD450T	450
KLLD600T	600



13.5mm on 50-225mm width

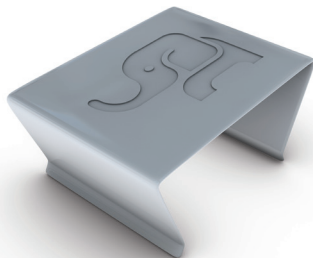
21.5mm on 300-900mm width

**Available finishes include:**  
Pre-galvanised to BS EN 10346:2009 (standard references throughout brochure).  
Powder coated (Prefix reference with CP).

**UNIKLIP**

Bag Ref. KLIPPKT  
Box Ref. KLIPBOX

Available in bags of 40 or boxes of 200.

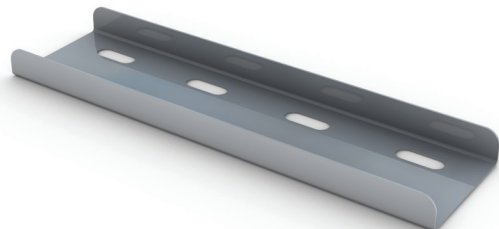


Uniklip is supplied with fittings and couplers.

**Fish Plate Coupler**

Ref. KLLD/FPC 50-600

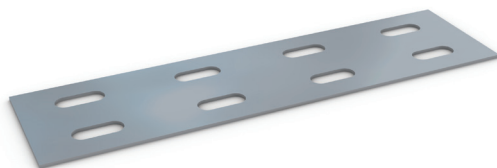
Length 200mm.



**Fish Plate**

Ref. FP 150-600

Length =200mm.



**Straight Coupler**

Ref. KLLD/SC

Length 200mm.  
Sold in pairs.

